



## **Labels and logistics catalogue**

**Smooth warehouse organisation**

Consulting | Development | Production



# proLogistik Group

## Quality that pays off

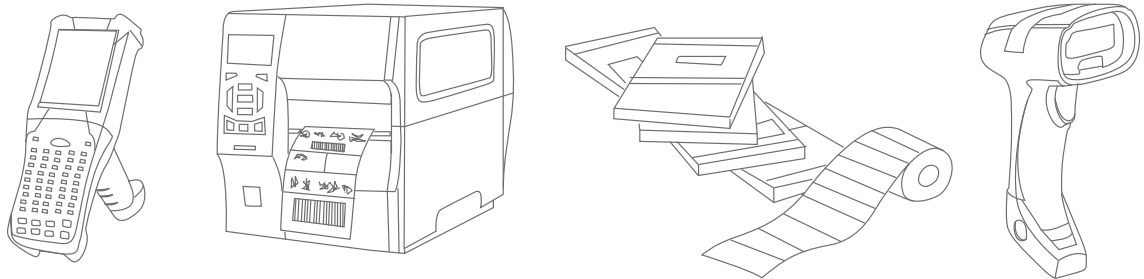
proLogistik develops powerful supply chain hardware and software. Profit from our integrated customer focus, diverse logistics know-how, and our all-round service aligned with the specifics of your industry as a matter of course. We set standards and cooperate in close exchange with you to achieve every individual goal.

proLogistik has stood for reliable total solutions for logistics and industry for more than three decades. Industrial hardware from forklift terminals to dialogue systems, "Made in Germany" and manufactured at the Dortmund site since 1983.

### For smooth warehouse organisation

proLogistik has maintained its own competence centre for warehouse organisation since 1998 with the proScan specialist area. Our specialists will always be competently at your side to help you choose the best products.

We are your contact for any questions on warehouse labelling, label procurement, and mobile data collection. The product range covers anything from hand-held readers and scanners, to printing systems, to labels and ink ribbons. We cooperate exclusively with well-known manufacturers such as ZEBRA, Toshiba, Honeywell, or Datalogic for a comprehensive and reliable hardware range.



# Inhalt

Quality That Pays Off	3
Consulting, Development, Production, Assembly	6
The Right Label for Any Needs!	7
Overview of the Most Important Label Shapes	9
Shelf and Warehouse Labelling	10
For WMS Use in the pL-Store	11
For Use in Refrigeration Down to -30 °C	12
For Indoor and Outdoor Use	13
Particularly Reflective	14
Dynamic Warehouses	15
The Electronic Alternative	16
Tools for Better Processes	18
From Standard to Comfort	26







# Competence for Your Warehouse

## Consulting, Development, Production, Assembly

### Optimise Your Warehouse Labelling and Organisation

Efficient and economical warehouse processes require the right mix of structure and organisation. Work processes need to be planned and coordinated. Responsibilities must be stipulated and the foundations to enable internal communication must be laid.

proLogistik created the independent competence department proScan in 1998 to support you in these matters. We offer the right solution for every need, sustainably improving your structures and processes. Processing in excess of 40 complete warehouse plans/markings per year, we have collected great experience and offer high reliability.

in retail and wholesale, the food industry, construction sector, textile industry, e-commerce, and the frozen food and air conditioning sectors alike. We have a product to match any industry.

We will optimise your processes. Let us show you how!



## Areas of Use

# The Right Label for Any Needs

## Smooth Processes by Correct Labelling

A label generally has three components: Carrier material, glue and top material. Together, they provide a corresponding end product designed for specific applications.

Your labels' looks depend on your needs. Requirements to labels can vary greatly between different areas of use. Some may be subject to ongoing weather exposure during outdoor use, while others may be subject to particular heat or cold or have specific requirements to flexibility or visibility.

Since we have made it our business to always offer the right solution for you, we have a vast variety in store. Of course, this includes individual solutions that make it easy for you to mark your products even subject to special circumstances.









# Overview of the most Important Label Shapes

**Nothing is impossible. If we have no standard solution for your requirements, we will develop an individual and custom-fit solution in contact with you.**

## Location Labels

Suitable for all standard shelf types, e.g., shelf racks, flow racks, or pallet racks. Produced with digital or thermal transfer printing processes. Materials such as polyester, Tyvek, textile, PVC, or deep-freeze paper (down to  $-40^{\circ}\text{C}$ ) are used. Such labels can be attached with magnets or adhesives (removable, permanent, extra strong adhesive).

## Multilevel location labels

Several superimposed locations/levels are printed on one label here. 1D and 2D codes, 1-colour in black or multi-coloured diverse: we can produce the right label for anyone and point out the advantages and disadvantages.

## PID

PID is short for pallet identification number. It is a multi-digit sequential number for unique assignment within a warehouse management system. Such labels are suitable for labelling parcels, pallets, or other packages. They are available in various formats and can be attached with adhesive (removable, permanent, strong adhesive) or a stapler.

## Deep-Freeze

Deep-freeze labels are often used to allocate articles even when subject to constantly changing climatic conditions. May be used for best-before notices, pallet, shelf, or product labelling in the deep-freeze warehouse and on deep-freeze packaging. The special deep-freeze paper withstands even extreme stress (down to  $-40^{\circ}\text{C}$ ) as well as temperature fluctuations. A number of adhesive types are available to choose from, including some that are suitable for medical laboratories, the pharmaceutical sector, and other segments.

## Plastic

Suitable and frequently used for labelling block and locations in larger formats due to their legibility even from a distance. They can be used as labels both indoors and outdoors since they are made of robust, weatherproof, and UV-resistant material (plastic, 2 and 3 mm thick). Black as well as retro-reflective foils can be used for the imprints to ensure scanning even in strong sunlight.

## Magnet

The ideal choice for constantly changing labelling since magnetic labels can be removed without leaving behind any residue – without any screwing or gluing. Permanently adheres to steel shelves in cold stores or freezer rooms. Suitable for all typical rack types, including deep-freeze, flow racks, shelf racks, and pallet racks. However, they are not suitable for outdoor use due to flash rust issues.

## Reflector

Specially designed labels produced by thermal transfer printing, suitable for warehouse and shelf labelling. Can be used on smooth and slightly structured surfaces and extend the scanning range (up to approx. 21 meters). Particularly suitable for block and high-bay warehouses.

## E-Paper

Electronic price tags in supermarkets or the use in mechanical and plant engineering are a large area of use here. E-paper displays are also a good solution in retail or logistics.



# Location/Multi-Level Labels

## Shelf and Warehouse Labelling

### Your benefits

- » Shorter order throughput times
- » Fewer search trips
- » Avoiding slow access times
- » Accelerated processes

Our location labels are suitable for all common shelf types in the warehouse. They can be used in a variety of manners, in pallet racks as well as in flow rack or shelf racks.

The robust and matt label material can be scanned easily.

This makes such labels ideal for data acquisition in warehouses are operated with forklift trucks. The barcode on the label can be read by warehouse staff in close proximity, just like location labels on the upper shelf levels. An optimal design and application of labels are decisive aspects, depending on the shelf level. This requires highly visible location labels, boards, or signs to ensure they can be found quickly.



### LOCATION/MULTILEVEL LABEL FACTS

AREAS OF USE	For all common shelf types in the warehouse, such as pallet rack, flow rack, shelf rack, etc.
FORMATS	50w x 720h mm 60w x 370h mm 70w x 500h mm other formats upon request
MATERIALS	Deep-freeze paper down to -40 °C, polyethylene, PVC, polyester, polystyrene, Tyvek, textile, label on magnet
COLOURS	The following colour combinations are possible to ensure sufficient contrast between background and bars: Background colours: white/yellow/orange/green/light blue
ATTACHMENT	Adhesive (removable, permanent, or extra strong adhesive), magnet
PRINT TYPE	Digital or thermal transfer printing
SPECIAL FEATURES	Clean the surfaces when re-labelling if necessary. Always test removable adhesive for residues beforehand. Deep-freeze warehouses (down to -40 °C) can be marked with location labels on a magnet that is, e.g., 1.5 mm thick, or with deep-freeze paper.



# PID Labels

## For WMS Use in the pL-Store

A coherent label logistics system is required for efficient deployment and optimum use of labels in the warehouse. We have developed the PID labels presented here specifically for use with our pL-Store® warehouse management system.

The right label for pL-Store®: PID labels are the ideal supplement if you are already using warehouse management software from proLogistik. PID is short for pallet identification number. This ten-digit number is used to assign each article within the WMS. Of course, PID labels can also be used in other applications thanks to their continuous numbering.

### Your benefits

- » Clear assignment
- » Universal use
- » Various formats
- » Highly resilient material



PID LABEL FACTS	
AREAS OF USE	Marking of pallets, packages, and other packages.
FORMATS	95w x 40h mm 150w x 100h mm double 180w x 70h mm double 75w x 58h mm 100w x 59h mm 210w x 48h mm double 100w x 200h mm 100w x 150h mm 100w x 48h mm other formats upon request
MATERIALS	Polyethylene, PVC, polyester, polystyrene, Tyvek, deep-freeze paper down to -40 °C
COLOURS	The following colour combinations are possible to ensure sufficient contrast between background and bars: Background colours: white/yellow/orange/green/light blue Bar colours: Blue black/blue/green/cyan/brown
ATTACHMENT	Adhesive (removable, permanent, or strong adhesive), stapler
PRINT TYPE	Digital or thermal transfer printing

# Deep-Freeze Labels

## For Use in Refrigeration Down to -30 °C

### Your benefits

- » Cold resistant adhesive
- » Robust deep-freeze paper
- » Safe adhesion
- » Diverse formats

Every single handling step, no matter if in transport or storage, puts an extreme strain on labels, e.g., by temperature fluctuations or mechanical loads. Requirements to labels are particularly high in the deep-freeze sector, where the adhesive labelling must remain in place even on very cold or partly frozen surfaces.

In order to ensure that the labels remain functional even under exceptionally harsh conditions in deep-freeze warehouses, deep-freeze labels are made of robust deep-freeze paper. Combined with a cold-resistant adhesive, this ensures that labels stick securely even to products that are already frozen.

The most important areas of use for deep-freeze-resistant labels include refrigerated storage in the food sector, medical and pharmaceutical areas, laboratories in the health sector, and logistics.



### DEEP-FREEZE LABEL FACTS

AREAS OF USE	Warehouse, shelf, pallet, or product labelling for deep-freeze warehouses, deep-freeze packaging or best-before-date.
FORMATS	89w x 36h mm 170w x 25h mm 150w x 55h mm 150w x 74h mm 60w x 200h mm 250 w x 100h mm 170w x 50h mm 180w x 70h mm 150w x 55h mm other formats upon request
MATERIALS	Deep-freeze paper, thermal TK paper, TK laser printable paper
COLOURS	The following colour combinations are possible to ensure sufficient contrast between background and bars: Background colours: white/yellow/orange/green/light blue Bar colours: Blue black/blue/green/cyan/brown
ATTACHMENT	Adhesive deep-freeze permanent
PRINT TYPE	Direct thermal or thermal transfer printing
SPECIAL FEATURES	Secure adhesion even on already frozen products due to special types of adhesive.



# Plastic Labels

## For Indoor and Outdoor Use

Plastic labels are designed for robust use in the warehouse. They are made of, e.g., 2- or 3-mm-thick plastic. A weatherproof and UV-resistant foil is used as the basis for the imprint, rendering plastic labels suitable for indoor and outdoor use alike.

Plastic labels are suitable for quick and clean marking and offer easy handling. Particularly large signs can be used for labelling block and locations, making them easy to read for forklift drivers.

### Your benefits

- » Clean, fast marking
- » Robust material
- » Suitable for indoor and outdoor use
- » Easy handling



PLASTIC LABEL FACTS	
AREAS OF USE	Special plastic labels for robust indoor and outdoor use.
FORMATS	40w x 100h mm 65w x 250h mm 100w x 200h mm 500w x 150h mm 500w x 500h mm A3, A4, A5 other formats upon request
MATERIALS	Plastic, 2 mm/3 mm thick, incl. holes based on customer specifications, weatherproof, UV-resistant
COLOURS	Yellow, white, other colours on request (in-house only)
ATTACHMENT	Metal hooks, clasps, screws, clamps, adhesives
IMPRINT	Transfer printing, resin printing
PRINT TYPE	Black foil, retroreflective foil(3M)
SPECIAL FEATURES	Weather resistant and weatherproof. Reflective film under the barcode allows scanning even in sunlight and scanning distances up to 21 m (in-house only, depending on barcode and scanner model).

# Reflective Labels

## Particularly Reflective

### Your benefits

- » Extended scanning range
- » Use even in sunlight
- » Suitable for indoor and outdoor use
- » High format diversity

Use reflective labels for clean scanning in spite of limited visibility. The labels reflect the light emitted by the scanner better than commercially available barcode labels would. This permits efficient work even under difficult conditions.

Reflective labels are equally suitable for indoor and outdoor use. Scanning is possible from a greater distance as well, ensuring quick and successful work. This is why such labels are particularly suitable for high rack warehouses as well as bulk storage. They can be used on smooth as well as slightly structured surfaces.



#### REFLECTIVE LABEL FACTS

AREAS OF USE	For warehouse and shelf marking
FORMATS	89w x 36h mm 170w x 25h mm 150w x 55h mm 150w x 74h mm 60w x 200h mm 250w x 100h mm 170w x 50h mm 180w x 70h mm 150w x 55h mm other formats upon request
MATERIALS	Reflective films from 3M, Avery, Reflexite
COLOURS	Silver
ATTACHMENT	Permanent adhesive
PRINT TYPE	Thermal transfer printing
SPECIAL FEATURES	The films are used where the labels are exposed to sunlight. They increase the scanning range (up to approx. 21 m). The barcode scanners and barcode sizes must be matched to each other precisely here (inhouse only).



# Magnetic Labels

## Dynamic Warehouses

Magnetic labels are the go-to solution if labelling changes frequently since they can be removed without leaving behind any residue, eliminating time-consuming removal of labels that were glued on multiple times or screwed on tightly.

Magnetic labels offer a permanent adhesive base. As a result, they can be optimally attached to steel shelves or galvanised shelves. The magnetic adhesion renders them suitable for storage labelling in deep-freeze rooms or cold stores. Bring order to your office, warehouse, or shipping department. Magnetic labels can be removed at need and reused elsewhere.

### Your benefits

- » Residue-free removal
- » Long-term adhesion
- » Easy removal and reuse
- » Different formats, colours, and material thicknesses



MAGNETIC LABEL FACTS	
AREAS OF USE	For all common shelf types in the warehouse, such as pallet rack, flow rack, shelf rack, deep-freeze warehouse, etc.
FORMATS	89w x 36h mm 170w x 25h mm 150w x 55h mm 150w x 74h mm 60w x 200h mm 250w x 100h mm 170w x 50h mm 180w x 70h mm 150w x 55h mm other formats upon request
MATERIALS	e.g., 1 mm, 1.5 mm, 3 mm strip-polarised magnet Label materials such as polyethylene, PVC, polyester are mounted/glued directly onto the magnet.
COLOURS	The following colour combinations are possible to ensure sufficient contrast between background and bars: Background colours: White/yellow/orange/green/light blue (only in-house)
ATTACHMENT	Magnetic
PRINT TYPE	Digital or thermal transfer printing
SPECIAL FEATURES	Deep-freeze warehouses (down to -30 °C) can be marked with magnet labels on a 1.5 mm thick magnet, for example, or with deep-freeze paper.

# E-Paper

## The Electronic Alternative

Labels or signs can be produced from conventional paper or used in digital form. E-paper has become established in many industries, replacing the classical paper labels. Are you looking for a versatile, modern, and digital form of signage? E-paper displays are the product you need!

Electronic price tags are used very frequently, e.g., in supermarkets or in the warehouse management of mechanical and plant engineering. However, retailers and in particular logistics also benefit from e-paper displays. They are characterised by good readability, ensured at all times due to reflection even in sunlight.

This is made sure by a flicker-free screen display no matter the viewing angle and lighting conditions. Perfectly legible at all times in room or daylight. Labels are applied by Wi-Fi instead of with a sheet of paper and a pen here, ensuring data such as goods, quantity, or price can be conveniently adjusted at any time to keep the range up to date!



### ADVANTAGES OF E-PAPER

- » Individual formats and colours available (black-and-white/black-white-red)
- » Full graphic display thanks to E-INK paper display
- » Versatile in trade, logistics, and industry
- » High longevity thanks to five-year battery life
- » Wide-ranging view thanks to a 180-degree angle



MDa 08.11.2018 / 09:46:41

WE-Nr.: 10051403  
Bayerische Milchindustrie eG  
Skyr Pfirsich 0,2%, Frankenland, 75 g

8 Kt (a 15 BE)  
20 BE  
PAL (a 48 Kt)

trag: \_\_\_\_ / \_\_\_\_  
n / Lage: \_\_\_\_  
11.11.2018  
6 Frische



10002392



# Warehouse Organisation

## Tools for Better Processes

### Warehouse Organisation with proLogistik

#### **Fully designed to meet your needs**

Efficient warehouse organisation is based on optimising work processes and controlling warehouse utilisation in the best manner possible. proLogistik products let you reduce time and costs while increasing productivity. Make your company more efficient with us!

proScan offers a vast range of tools that to match your requirements. From shelf tags and scanner or transparent pockets to label holders and pallet stands, to self-adhesive digits, label dispensers and practical desktop devices for the office,

all our products are available in different versions and variations to enable to you organise your warehouse perfectly customised to your needs. We are happy to produce bespoke products for you if you cannot find a suitable specification in our range. Talk to us about your needs at any time without incurring any obligation. We are happy to help!



## Shelf Tags

### Better orientation in the warehouse

Use of shelf tags in your warehouse ensures that order pickers know where to go immediately. They can be printed on both sides and attached in the desired position easily. Choose between screw-on hole drilling or

glued versions. Shelf tags improve your warehouse structure and optimise walking distances.

We offer shelf tags in the default format of 170 x 75 mm incl. slant

(40 x 75 mm, left/right). Do you need any other format? That's no problem. We will gladly produce shelf tags to your specifications. Simply talk to us about it!

- » Individual marking by double-sided printing
- » Easy to attach
- » Custom formats are possible



## Scanner/Transparent Pockets

### Weatherproof plastic pocket

Hand-held devices of various types, including scanners, should be suitably protected from external influences. proLogistik offers you the right product for every area of application with individually designed scanner and transparent pockets. Our tools help you ensure full function even subject to adverse conditions such as dust, moisture, or other weather influences.

We offer various types of plastic pockets made of transparent film suitable for scanners. Choose from wire clips, back-mounted

magnetic strips, or plastic-coated bending wire. Available in DIN A4 and DIN A5 formats, each landscape or portrait.

- » Various landscape and portrait formats selectable
- » Available in three versions
- » Secure protection for scanners and PDAs



# Warehouse Organisation

## Tools for Better Processes



### Label Holders/Strips

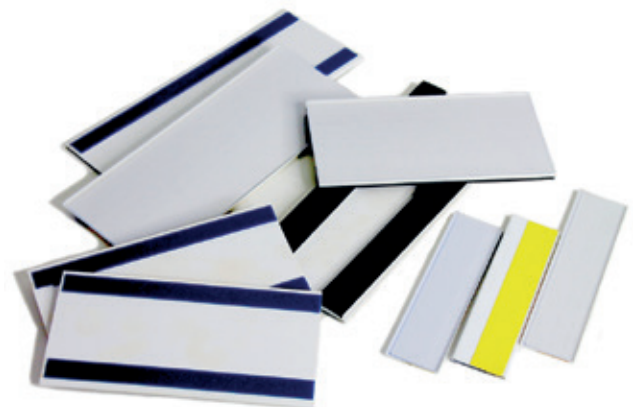
#### Optimal marking of pallet or shelf racks

Optimise warehouse processes by clearly marking entire shelf traverses or individual storage bins. proLogistik offers many options and formats to make sure that you will find the perfect product for your warehouse.

Label holders from our range are made of impact-resilient rigid PVC with integrated dust protection edge. Optionally available as self-adhesive or magnetic versions, and, of course, scanner-compatible. Choose from different insertion heights, lengths, and colours to find the right product for your needs.

There's nothing to match what you are looking for? We will happily supply label holders and strips customised to your precise size needs. Talk to us about it. We will return individual advice.

- » Scanner-compatible
- » Available in various colours
- » Individual sizes possible
- » With integrated dust protection edge



### Pallet/Poster Stands

#### Ideally marking constantly changing storage areas

Labels in the poster frame can be exchanged quickly and easily if the sizes, positions, or stored goods change. Floor poster stands are ideal for displaying, e.g., seasonal products.

We offer different poster stand versions, either complete with a base or as an extensible standpipe. Customise the product to your needs in colour, frame, or tube size. We will gladly advise you as well as customised.

- » Optimal storage area labelling
- » Uncomplicated exchange of labelling
- » With foot or standpipe (extensible)
- » Colour, frame, and tube can be combined freely



# Self-Adhesive Digits/ Numbers/Barcodes

## Subsequent marking of labels or long material carriers

You can label shelf boxes, crates, or other objects as you wish and thus easily allocate them with self-adhesive digits, numbers, or barcodes.

proLogistik will happily create individual self-adhesive letters, digits, numbers, or barcodes for you on request. Our material is typically used for the labelling truck tarpaulins. This way, we can guarantee a strong attachment as well as particular longevity.

- » Simple labelling even subsequently
- » Tried and tested, robust material
- » Individual design precisely based on customer specifications
- » Good adhesive strength on all surfaces

# Label Dispenser/Table Dispenser

## Label freight or stored goods quickly and conveniently as needed

The labels are placed on a film, to be easily pulled out and torn off to be stuck on anywhere. They are designed specifically for warehouse management and for use in the retail trade.

The proLogistik range contains various table dispenser models. Any number of labels can be pulled out independently of the core diameter and used for product labelling there. We will happily advise you on the differences between the various models to let you choose the best possible product for your needs.

- » Unlimited label lengths can be implemented
- » Label roll diameter up to 180 mm
- » Many model variants available
- » Reliably applicable in trade, industry, and logistics

## Technical specification

### Model versions

6023N	45 mm	Label roll diameter	max. 180 mm
6020	60 mm	Core diameter	any
6020N	90 mm	Label lengths	unlimited
6021	100 mm	Colour	red, silver
6021N	120 mm		
6022	170 mm		
6022N	180 mm		
Extra separator plate			

# Warehouse Organisation

## Tools for Better Processes

### Office Table Devices

#### **Simple, quick, and accurate product marking and labelling**

Desktop units for the office combine functionality and design. The proLogistik label dispenser is a pleasant eye in addition to being a useful object LABEL PRINTER.

Available in a usable width of 75 mm and a maximum outer roll diameter of 110 mm. Choose a roll divider in green, blue, orange, grey, or red now. One roll divider each is included.

- » Functional label roller in a handy format
- » Max. outer roll diameter: 110 mm
- » Roll divider already included in the scope of delivery
- » Different colours available



### Manual Table Device Series – SP

#### **Reliable and easy sticking on**

These devices permit sorting, cost-efficient handling of adhesive labels on rolls. They can be used for one or several rolls mounted side by side. Designed for a maximum outer roll diameter of 170 mm with internally wound label rolls.

Choose the right model from five usable widths from our standard design, in white (powder-coated) or metal:

- » SP 65 mm (one roll divider)
- » SP 90 mm (one roll divider)
- » SP 120 mm (two roll dividers)
- » SP 180 mm (two roll dividers)
- » SP 300 mm (four roll dividers)
- » Easy sticking on at any time
- » Available in five usable widths
- » Maximum roll outer diameter: 170 mm
- » Cost-efficient and functional









# Warehouse Organisation

## Tools for Better Processes

### Stainless-Steel Printer Housings

#### Protecting label printers in challenging applications

The stainless-steel printer housings ensure smooth operation at ambient temperatures of down to -40 °C. They can withstand the demands of cold storage or deep-freeze areas as well. On top of this, a perfectly robust, waterproof capsule inside the housing ensures label printer function even when blasting is required.

An extensible slide rail under the printer makes the chain rollers easy to replace and printer settings quick to change. The default version is available in the format 645.5 x 400 x 483 mm, designed for Toshiba B-SA4TM or Zebra ZM400. Of course, we can implement individual formats and features for you. Just talk to us about it!

- » Safe use in adverse environments (deep-freeze, hygiene)
- » Easy handling of ribbons and label rolls
- » Adaptation to your printer model possible



### Cleaning Sets

#### Cleaning cards for label printers

Ensure your label printer's function. proLogistik offers a card impregnated with cleaning fluid for cleaning the print head and rubber roller. It can be used with any common direct thermal and thermal transfer printer. Simply open the print head, insert the cards, lock them, and slowly pull the card out – done!

Fast, easy cleaning | Suitable for all printer types | Package contents: 25 cleaning cards

#### Cleaning cloths for label printers

Use special cleaning cloths to easily clean the most important wear parts of your label printer, including the print heads and rubber rollers. Cleaning cloths extend the service life of the thermal print head and effectively remove any residues.

Suitable for all printer types | Fast, simple cleaning of all wear parts | Package contents: 100 cloths

#### Full cleaning set for label printers

The cleaning set for label printers contains all important materials to clean your printers in the best possible way. Regular care and maintenance ensure usability and function. Ensure an optimal print image every time, for direct thermal and thermal transfer printers alike.

Print head service life extension | Optimal print images at all times | Inaccessible areas (e.g., light barriers) can be reached with compressed air spray | Clean rollers optimise label transport | Suitable for all printer types | Label solvent (Citro solution) for transport rollers included



# Customer Service proLogistik Style

## From Standard to Comfort

We would like to facilitate your everyday work with our efforts.

### **We take time for you to determine your company's needs precisely.**

We offer customised service as you desire, from the default solution to the comfort package. Let us give you an overview of our key steps below.

#### **On-site visit**

We will acquire a precise idea of the situation at your company. We will find the right material mix for your area of application to meet your requirements depending on mechanical, chemical, thermal, or climate strains.

#### **Concept development**

We will provide a comprehensive concept and quotation based on our analysis, mobile adhesive, and scan tests as well as an assembly and barcode consultation.

#### **Order management**

Submit your details to us via our sample print file template. We will create a customised print layout together. Subsequently, we will convert the file into final print data and print it once approved by you. Our ISO 9001:2015 certified production offers quality "Made in Germany".

#### **Unlimited service**

If desired, we can install your labels in your warehouse for you. Each label is also provided as a PDF for quick reprinting, to keep processes in your warehouse smooth. Later repeat orders are possible in small quantities as well. On top of this, we offer blank material for reprinting on site.

#### **Try us non-committally at any time**

We offer matching material samples as adhesive labels (blank/custom-printed) or as DIN A4/A5 sheets for laser printing in the desired design. Of course, this

offer includes custom productions. Try it out. Our consulting is non-committal. Contact us!







# proLogistik

GROUP

proLogistik Group  
Fallgatter 1  
44369 Dortmund  
Deutschland

+49 231 5194-0  
[marketing@prologistik.com](mailto:marketing@prologistik.com)  
[www.prologistik.com](http://www.prologistik.com)