



DEVELOPMENT,  
PRODUCTION  
AND SERVICE  
AT THE DORTMUND  
SITE

## TECHNICAL DATA

### pro-V-panel Android

The pro-V-panel terminal PC is an integrated panel PC of the latest generation with diverse uses. The key data are: Full HD resolution, 16:9 wide-screen format and multi touch technology. Apart from this, the pro-V-panel, which can be freely configured by the customer, is equipped with the latest CPU hardware from Intel®, so that no aspect of the performance remains unfulfilled for you.

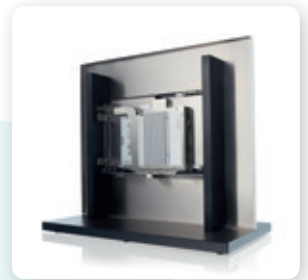
„Custom-made“ by proLogistik Group

Coupled with all the important features, the Android version ensures a user-friendly interface with graphical highlights. The pro-V-panel is available in the sizes 15.6", 18.5", and 21.5". It can be configured to your needs with any common interface. The Qualcomm Snapdragon® 600 Quad-core processor ensures a high performance. The pro-V-panel with Android is the ideal terminal PC for installation in manufacturing and production. It can be flexibly connected to any production system. Profit from our on-site service and short waiting times.

# Technical data

## IDEAL TERMINAL-PC FOR INSTALLATION IN MANUFACTURE AND PRODUCTION

The pro-V-panel is optimal for wall installation or attachment with a holder in the industrial area thanks to its robust build. Short waiting times and a comprehensive service from the site in Germany ensure smooth procedures.



<b>DISPLAY DIAGONALS</b>	15,6", 18,5", 21,5"
<b>WEIGHT</b>	4,1 - 5,3 kg, depending on size
<b>CPU</b>	NXP i.MX8 QuadMax (4x Cortex A53 up to @ 1.2 GHz, 2x Cortex A72 up to @ 1.6 GHz, 2x Cortex M4 @ 264 MHz)
<b>RAM</b>	2 GB LPDDR2
<b>TOUCHSCREEN</b>	Projected capacitive touchscreen; AR-coated composite safety pane
<b>DISPLAY</b>	1920x1080 Full HD
<b>MASS STORAGE</b>	32 GB eMMC
<b>USB</b>	4 x USB 2.0
<b>BLUETOOTH</b>	Bluetooth 4.0, BT LE
<b>NETWORK CONNECTION</b>	Ethernet 10/100/1000 Mbit/s
<b>WIFI</b>	WIFI-module IEEE 802.11 a/b/g/n
<b>AERIAL</b>	Internal aerial for frequency band 2.4 GHz/5 GHz and Bluetooth integrated in the housing
<b>POWER SUPPLY</b>	9-75 VDC / max. 36 W
<b>OPERATING SYSTEMS</b>	Android

