



DEVELOPMENT,
PRODUCTION
AND SERVICE
AT THE DORTMUND
SITE

Technical Data

pro-V-panel Windows / LINUX / IGEL

The pro-V-panel terminal is an integrated panel PC of the latest generation with diverse uses. The key data are: Full HD resolution, 16:9 wide-screen format and multi touch technology. Apart from this, the pro-V-panel, which can be freely configured by the customer, is equipped with the latest CPU hardware from Intel®, so that no aspect of the performance remains unfulfilled for you.

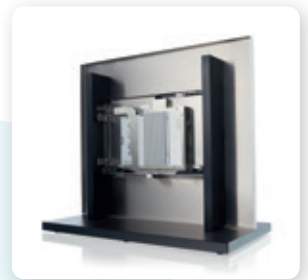
„Custom-made“ by proLogistik Group

Of course, all required interfaces, such as USB and RS232, HDMI, Bluetooth, LAN, and audio, are provided. Operating systems such as Windows, Linux and Igel are also offered and can be adjusted for the customer and customised to your production system. The highest demands of stability, resilience, and flexibility are met by this panel PC in the versions 13.3", 15.6", 18.5", and 21.5".

Technical Data

The pro-V-panel is optimal for wall installation or attachment with a holder in the industrial area thanks to its robust build.

Short waiting times and a comprehensive service from the site in Germany ensure smooth procedures.



DISPLAY DIAGONALS	15,6", 18,5", 21,5"
WEIGHT	3,6 - 5,3 kg, depending on size
CPU	Intel® Elkhart Lake oder Tiger Lake
RAM	4GB-64GB DDR4 RAM (Whiskey Lake)
TOUCH SCREEN	Projected capacitive touchscreen; anti-reflective composite protective window
DISPLAY	1920x1080 Full HD
MASS STORAGE	mSATA 32GB - 128GB; optional SSD 80GB - 500GB; industrial flash memory with expanded temperature range
USB	3x 2.0, 2x 3.0
HDMI	Mini HDMI
NETWORK CONNECTION	Ethernet 10/100/1000 Mbit/s
POWER	18-75VDC
OPERATING SYSTEMS	Windows, LINUX, IGEL

