



# Technical Datasheet

## pro-V-pad Classic Android 10.x

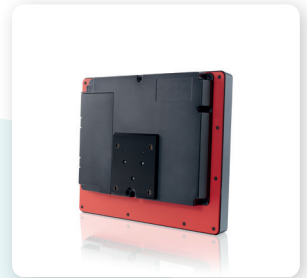
Our high-performance pro-V-pad Classic has comprehensive equipment in the current Android version as well. Thanks to the Android operating system in version 10.x, and a high-performing NXP i.MX 8QMTM Octa-Core processor as its core, the pro-V-pad Classic Android 10.x is set up future-proof for you.

### User-friendly application with Android

As the most-frequently used operating system on mobile devices, Android has long found access to industrial applications. In coordination with high-performance proLogistik hardware, Android represents graphical and user-friendly user interfaces. Of course, the pro-V-pad Classic Android 10.x is also equipped with all technical features for best user friendliness. This includes the wear-free and scratch-proof touch surface with high-capacity multitouch-technology (PCAP) that can be operated well even with gloves. Furthermore, the terminal stands out with its many interfaces and diverse software integration options. The pro-V-pad Classic Android 10.x is, therefore, an ideal on-board computer for mobile and stationary use in warehouse and logistics.

# Technical Data

<b>SIZE, WEIGHT</b>	10,4" (280 x 211 x 66 mm), 2.5 kg 12,1" (321 x 260 x 72 mm), 3.3 kg 15,0" (372 x 296 x 72 mm), 4.1 kg
<b>CPU</b>	NXP i.MX8 QuadMax (4x Cortex A53 up to @ 1.2 GHz, 2x Cortex A72 up to @ 1.6 GHz, 2x Cortex M4 @ 264 MHz)
<b>PROTECTION</b>	IP65
<b>CLASS RAM</b>	4GB LPDDR4
<b>TOUCH SCREEN</b>	Capacitive multi-touch technology with hardened plastic protective pane
<b>DISPLAY</b>	Industry colour TFT display 1024x768 XGA, LED-Backlight
<b>HOUSING</b>	Impact-resilient plastic housing with attachment option for a VESA75 turning/tipping holder
<b>MASS STORAGE</b>	32GB eMMC
<b>USB</b>	4 x USB 2.0
<b>BLUETOOTH</b>	BT 4.0 or 5.2 BT LE
<b>NETWORK CONNECTION</b>	1x 10/100/1000 Mbps Ethernet RJ45
<b>WIFI</b>	broadband radio module IEEE802.11 ac/a/b/g/n
<b>AERIAL</b>	2x internal aerial for room diversity; frequency band 2.4 GHz/5 GHz
<b>POWER</b>	9-75 VDC / max. 40 W
<b>TEMPERATURE RANGE</b>	-30 °C to 50 °C, heating module optional
<b>OPERATING SYSTEM</b>	Android 10.x



- Independent connection to WMS/ERP systems
- Robust and long-lived
- Operable with gloves
- For all warehouse areas
- Customer service on site

