



DEVELOPMENT,  
PRODUCTION  
AND SERVICE  
AT THE DORTMUND  
SITE

## Technical Data

### pro-V-panel Windows / LINUX / IGEL

The pro-V-panel terminal is an integrated panel PC of the latest generation with diverse uses. The key data are: Full HD resolution, 16:9 wide-screen format and multi touch technology. Apart from this, the pro-V-panel, which can be freely configured by the customer, is equipped with the latest CPU hardware from Intel®, so that no aspect of the performance remains unfulfilled for you.

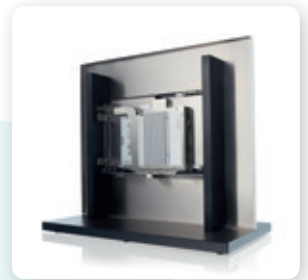
„Custom-made“ by proLogistik Group

Of course, all required interfaces, such as USB and RS232, HDMI, Bluetooth, LAN, and audio, are provided. Operating systems such as Windows, Linux and Igel are also offered and can be adjusted for the customer and customised to your production system. The highest demands of stability, resilience, and flexibility are met by this panel PC in the versions 13.3", 15.6", 18.5", and 21.5".

# Technical Data

The pro-V-panel is optimal for wall installation or attachment with a holder in the industrial area thanks to its robust build.

Short waiting times and a comprehensive service from the site in Germany ensure smooth procedures.



<b>DISPLAY DIAGONALS</b>	15,6", 18,5", 21,5"
<b>WEIGHT</b>	3,6 - 5,3 kg, depending on size
<b>CPU</b>	Intel® Whiskey Lake
<b>RAM</b>	4GB-64GB DDR4 RAM (Whiskey Lake)
<b>TOUCH SCREEN</b>	Projected capacitive touchscreen; anti-reflective composite protective window
<b>DISPLAY</b>	1920x1080 Full HD
<b>MASS STORAGE</b>	mSATA 32GB - 128GB; optional SSD 80GB - 500GB; industrial flash memory with expanded temperature range
<b>USB</b>	3x 2.0, 2x 3.0
<b>HDMI</b>	Mini HDMI
<b>NETWORK CONNECTION</b>	Ethernet 10/100/1000 Mbit/s
<b>POWER</b>	18-75VDC
<b>OPERATING SYSTEMS</b>	Windows, LINUX, IGEL

